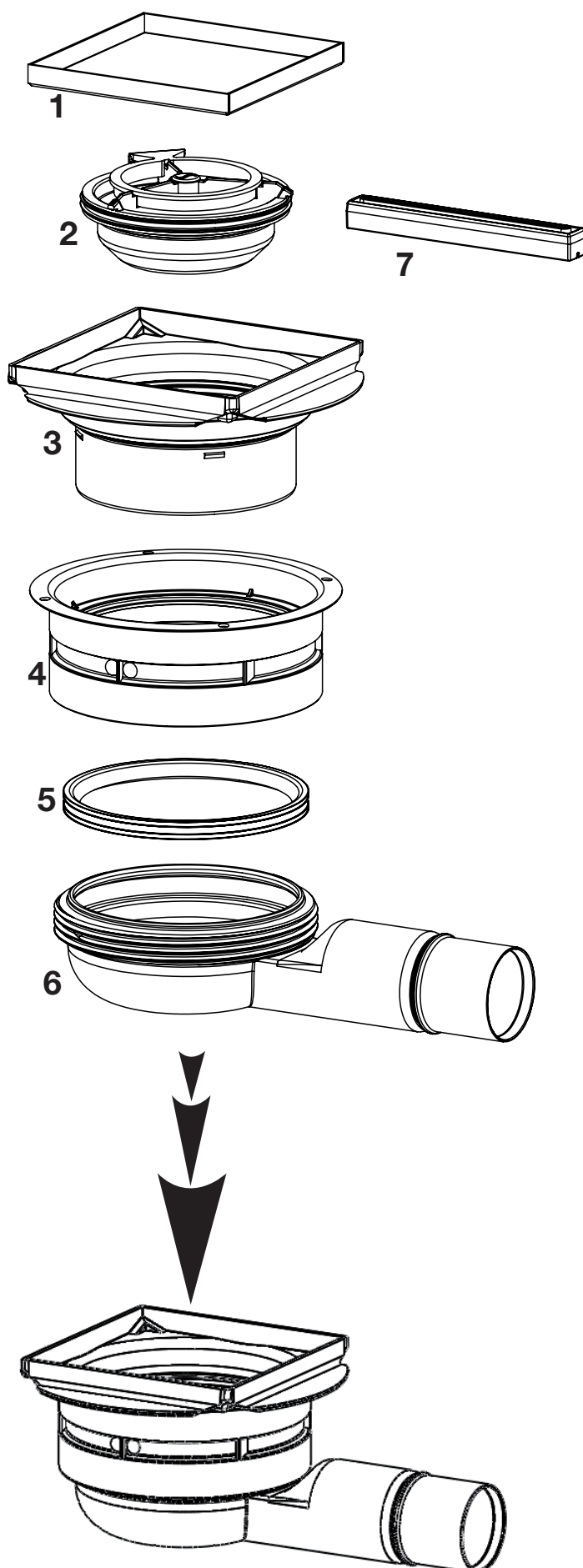


INSTALLATION INSTRUCTION

Minimax 50 Two Part Tile

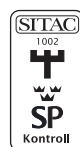


Carefully read the installation instructions before assembling.

- 1 Grate / Tile Insert
- 2 Purus Nood trap
- 3 Top section
- 4 Middle section
- 5 Gasket
- 6 Outlet section with 1 1/2" ABS adapter for solvent weld
- 7 Installation tool

The Minimax two part tile is a specific wet room floor gully for wooden joists in connection with tile backer boards only. The floor gully consists of three main sections: the top section (3), middle section (4) and the outlet (6).

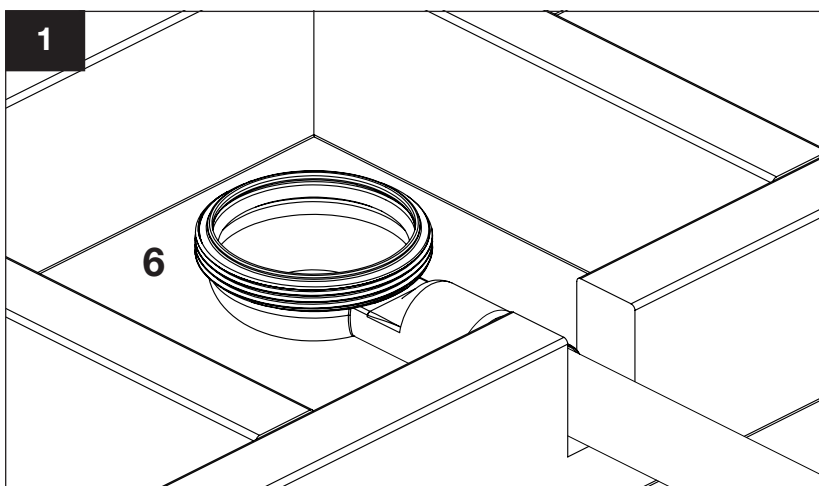
Minimax two part tile is equipped with a clamping ring that connects the waterproof membrane securely to the floor gully. The Purus nood trap is a combined water and mechanical trap which always is closed for foul odours, water build-up and pests.



Our ongoing product development may cause changes in the specifications. We reserve these rights.

PURUS

Installation:

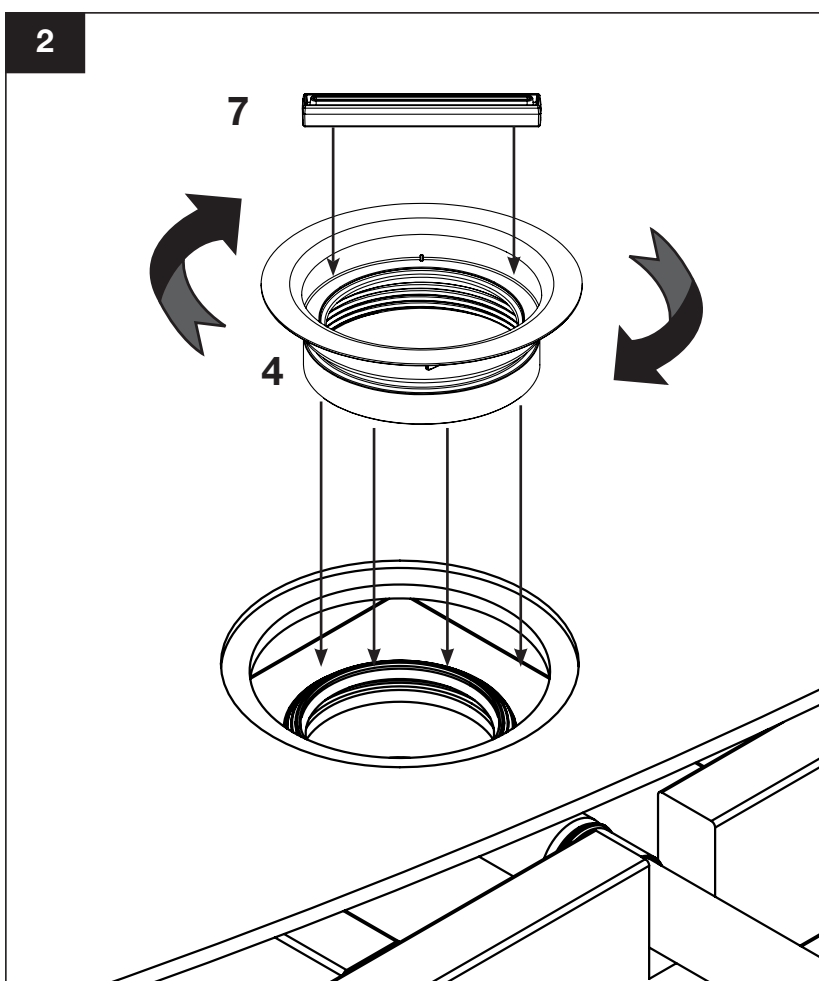


Connect the outlet securely (6) to the waste pipe system to ensure no leaks.

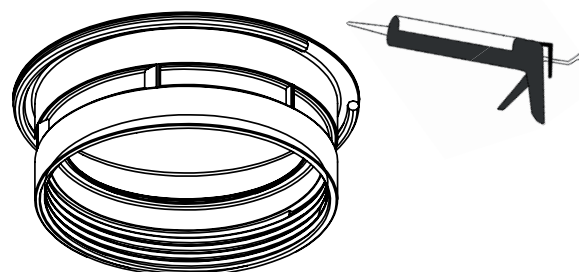


Test for leaks before proceeding.

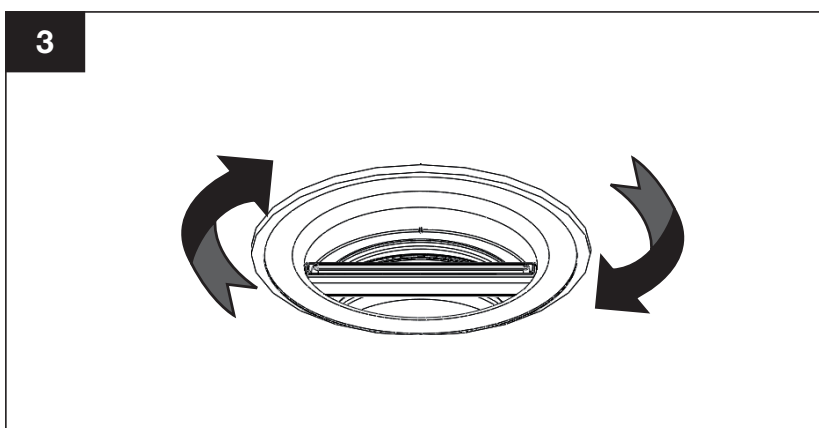
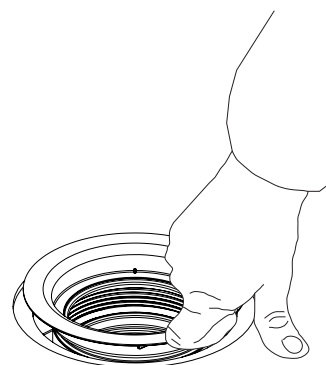
Support the outlet section (6) of the floor gully vertically before laying the floor former tray and floor boards.



Add a bead of MS polymer to fix the middle section to the board.



Grab the outlet section (6) with one hand and start screwing on the middle section (4). Continue using the installation tool.

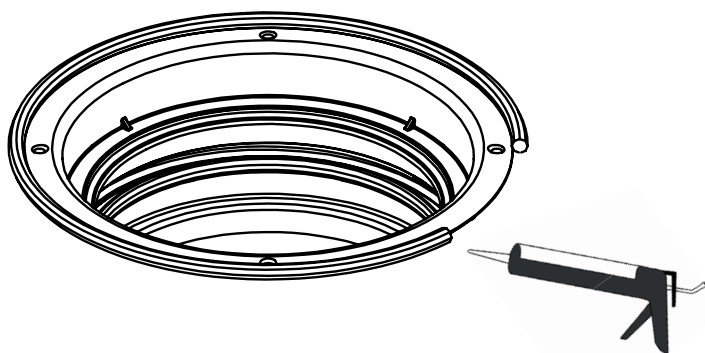


Screw down the middle section (4) firmly with the installation tool so that the middle (4) and the outlet sections (6) are fully fixed together.



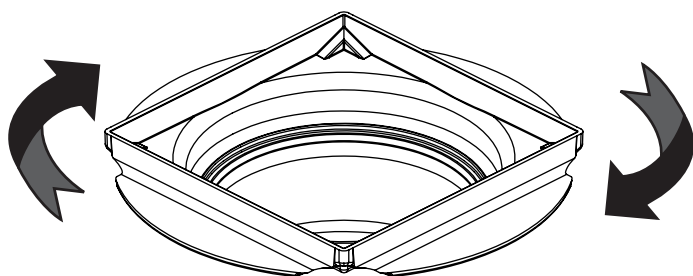
Remember to remove the installation tool (7) from the floor gully.

4



Add a new bead of MS polymer around the whole of the middle section (4).

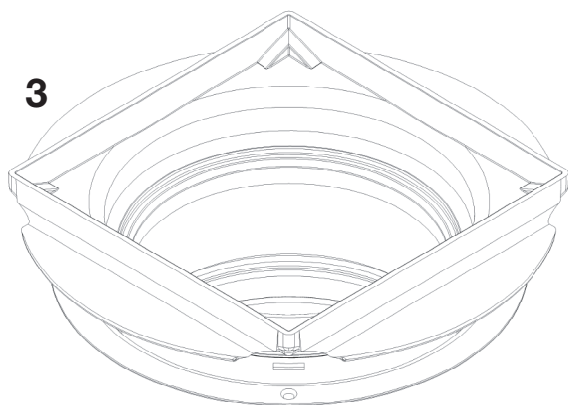
5



Place the top section (3) in to the middle section (4) and rotate the top section (3) so that it fits the orientation of the tiles.

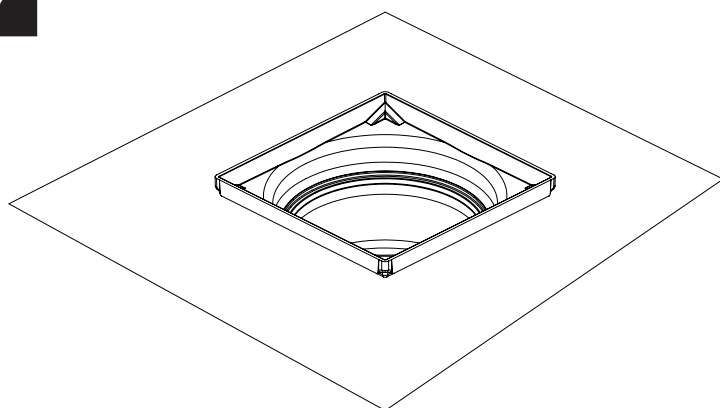
6

3



Push the top section (3) firmly inside the middle section (4) until they click together. The gasket (5) should not be visible when the top section (3) is installed correctly.

7



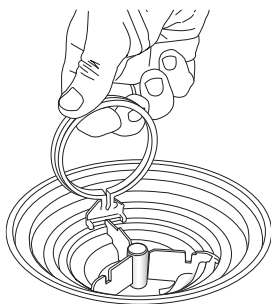
Place and seal with waterproof membrane so it is touching the frames.



Test fully for leaks before using the shower.

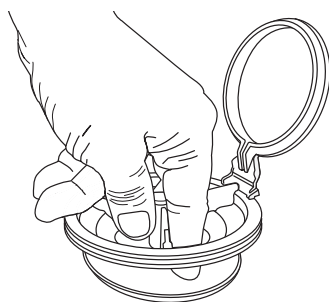
Cleaning and inspection:

1



Lift up the handle and lift up the water trap.

2

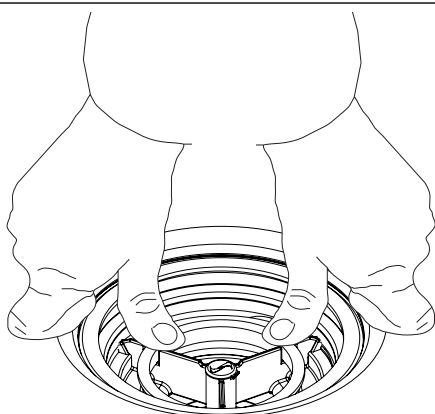


Clean the water trap while it is open.

Check that the water trap is not leaking by examining the rubber gasket underneath.

Clean the floor gully from any dirt, hair and debris.

3



Lubricate the rubber gasket with soapy water and push the water trap into place. With two thumbs on each side. Ensure that it's in the proper position secure and tight.